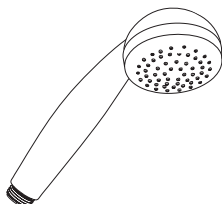
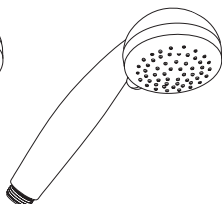


hansgrohe

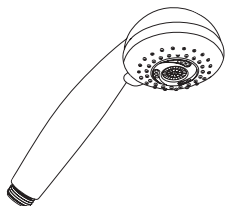
- DE** Montageanleitung
FR Instructions de montage
EN assembly instructions
IT Istruzioni per Installazione
ES Instrucciones de montaje
NL Handleiding
DK Monteringsvejledning
PT Manual de Instalação
PL Instrukcja montażu
CS Montážní návod
SK Montážny návod
ZH 组装说明
RU Инструкция по монтажу
HU Szerelési útmutató
FI Asennusohje
SV Monteringsanvisning
LT Montavimo instrukcijos
HR Uputstva za instalaciju
TR Montaj kılavuzu
RO Instrucțiuni de montare
EL Οδηγία συναρμολόγησης
SL Navodila za montažo
ET Paigaldusjuhend
LV Montāžas instrukcija
SR Uputstvo za montažu
NO Montasjeveiledning
BG Инструкция за употреба
SQ Udhëzime rreth montimit
AR تعليمات التجميع



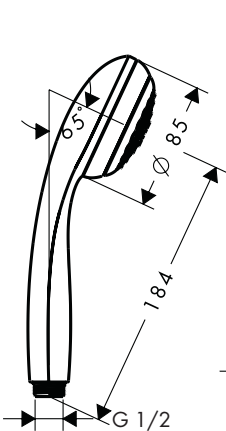
Crometta 85 1jet
28585000



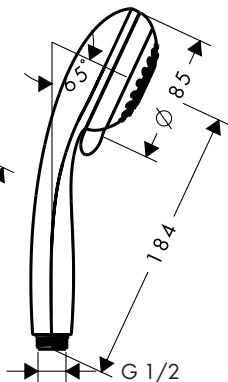
Crometta 85 Vario
28562000



Crometta 85 Multi
28563000



Crometta 85 1jet
28585000



Crometta 85 Vario
28562000

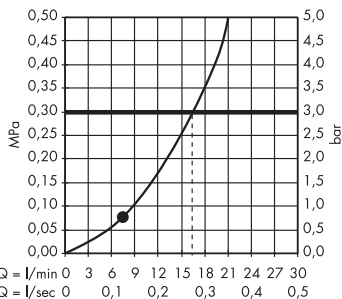
Crometta 85 Multi
28563000



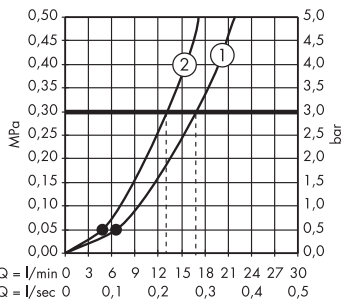
P max. 0,6 MPa 0,1 - 0,4 MPa
6 bar 1 - 4 bar



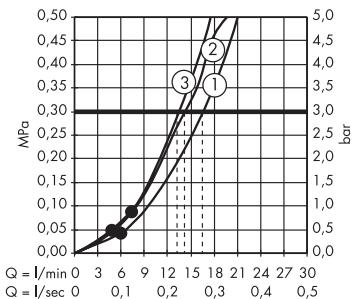

T max. 60 °C 40 - 50 °C

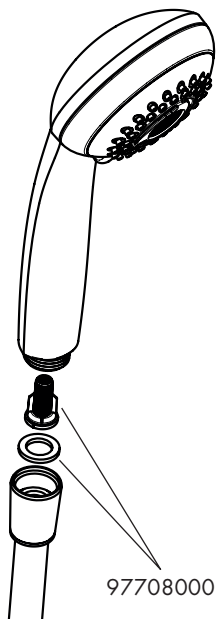
Crometta 85 Ijet 28585000

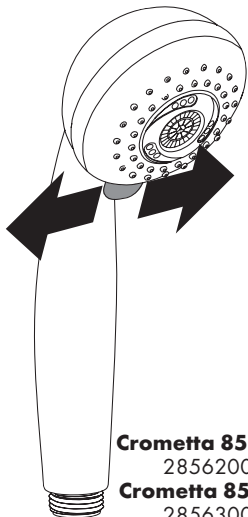


Crometta 85 Vario 28562000



Crometta 85 Multi 28563000



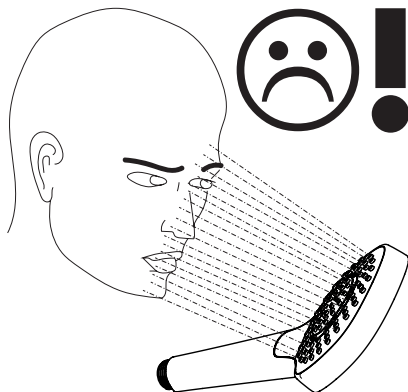


Crometta 85 Vario

28562000

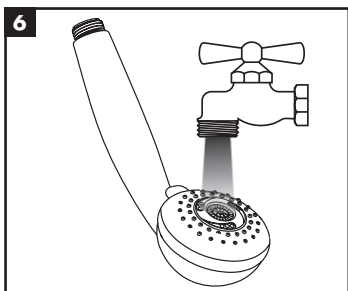
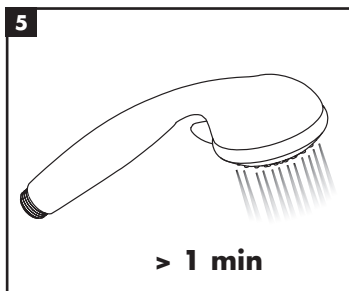
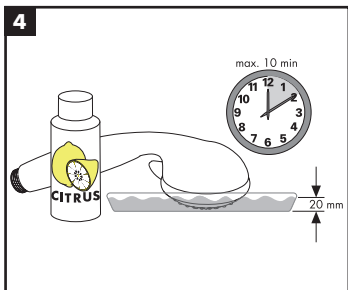
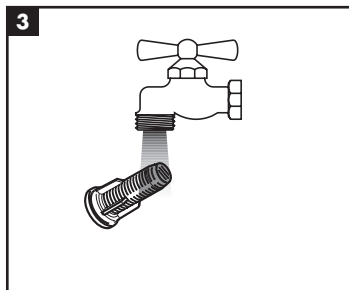
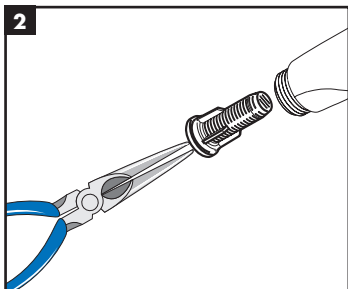
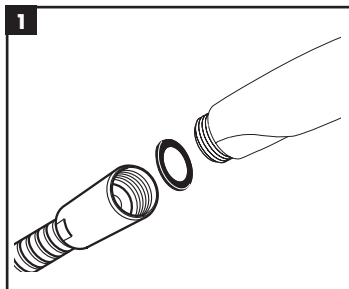
Crometta 85 Multi

28563000



| | P-IX | DVGW | SVGW | ACS | WRAS | NF | KIWA |
|-----------------|---------------|-------------|-------------|------------|-------------|-----------|-------------|
| 28562000 | P-IX 18738/IC | BT0633 | X | X | X | X | X |
| 28563000 | P-IX 18739/IB | BT0633 | X | X | X | | X |
| 28585000 | P-IX 19694/IA | | | X | X | X | X |





hansgrohe

Hansgrohe · Auestraße 5 - 9 · D-77761 Schiltach
Telefon +49 (0) 78 36/51-1282 · Telefax +49 (0) 7836/511440
E-Mail: info@hansgrohe.com · Internet: www.hansgrohe.com

3/2016
9.04.575.04